

CRIBWARE Client Server

Overview

The CRIBWARE client/server architecture allows users to maximize performance and improve data integrity since all database operations take place on the server machine. Clients access the server only when requesting data and only the results travel across the network. In addition, the SQL Server includes optimizations to improve nested query performance and performance of queries joining many tables.

Benefits

- Performance - increased speed
- Robustness - improved data integrity in mixed multi-user environments
- Efficient - administration ease, data maintenance, small hardware footprint
- SQL - data analysis
- Maximizes hardware resources

Features

- Runs on "Microsoft" servers and workstations
- Easy to use
- Customer can purchase a license with up to 1,024 users
- Secure data
- ODBC compatibility

The Client/Server advantage

Data Integrity

Since a single application - the CRIBWARE Server - is in charge of all open database tables, the data remains in more controlled environment resulting in improved data integrity. This intangible & transparent advantage provides a substantial benefit since most manufacturing and service organizations can't afford down time due to data corruption.

SQL Support and Conformance

Tailored for high volume production environments, the SQL Server includes optimizations such as sophisticated query rewrite techniques to improve nested query performance and join-order optimization to improve performance of queries joining many tables. The SQL Server extensively caches and buffers information for maximum transaction and query throughput. The SQL Server includes embedded SQL and interactive SQL utilities, and an ODBC driver.

Cache Performance

Since the CRIBWARE Server is managing all the data files, huge caches can be created on the computer actually running the CRIBWARE Server to boost performance. Performance increases of 10% to 40% can be expected depending on system load (e.g. how many users/specific operations are being performed), operating systems used and other applications running on the server.

Growth & Asset Protection

CRIBWARE features that take advantage of new market technologies also require greater processing power. Better performance translates directly to extended computer life in two ways:

- After several years, replacing the Server computer with newer equipment provides performance enhancements across the network and is more cost effective than replacing workstations.
- Concentrating the power (and cost) on the server and within the network backbone allows less computer power at the CRIBWARE workstation.

Server:

A program that provides some service to other (client) programs. The connection between client and server is normally by means of message passing, often over a network. The server will run continuously, waiting for requests to arrive from the clients.

Client:

A computer system or process that requests a service of another computer system or process (a "server") and accepts the server's responses.

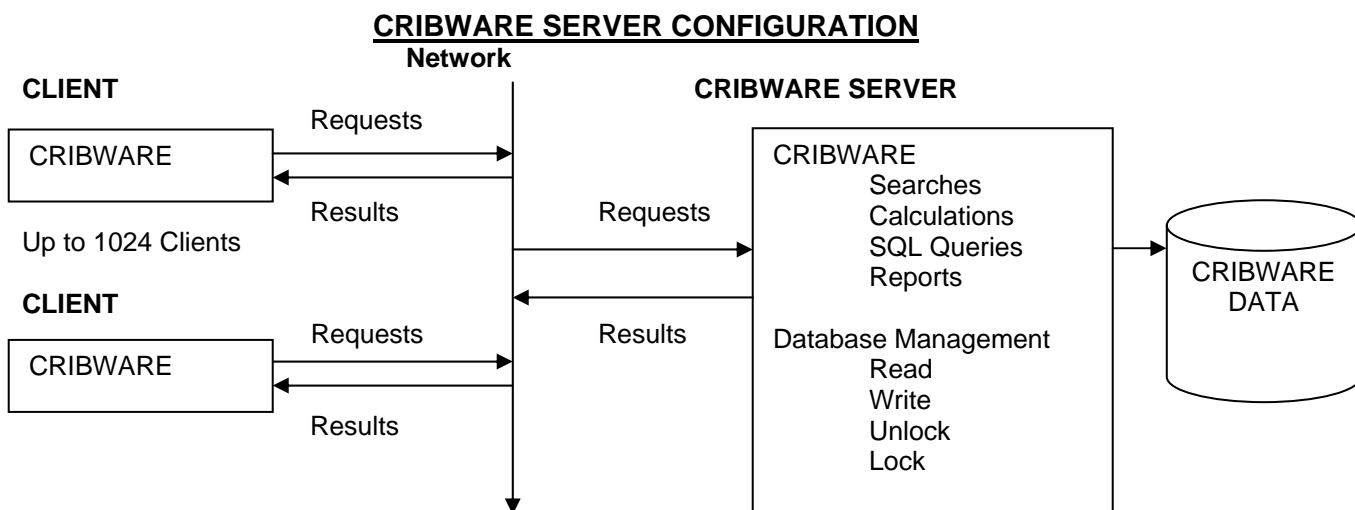
CRIBWARE Client Server

Who needs it?

The best candidates for CRIBWARE Server are installations that have:

- Huge data volumes
- Multiple workstations in use simultaneously
- Remote sites operating on a shared CRIBWARE database structure

System Operation



The operational simplicity of the CRIBWARE Server conceals an engine that has been continuously refined over the past twenty years. The CRIBWARE Server utilizes native low-level threads providing exceptional performance. All disk I/O is performed by the Server, taking full advantage of sophisticated data and index caches, and thereby minimizing network traffic for maximum performance. Heavily dynamic indices are automatically maintained for optimal speed and size.

FairCom Servers are easy to set up and require minimal system tuning. The database is automatically self-tuning, compensating for the variations in numbers of end-users. This solution requires minimal ongoing administration and maintenance.

The CRIBWARE Advanced Reports (e.g. Crystal Reports) can be used to create custom reports and graphs independently by the end-user.

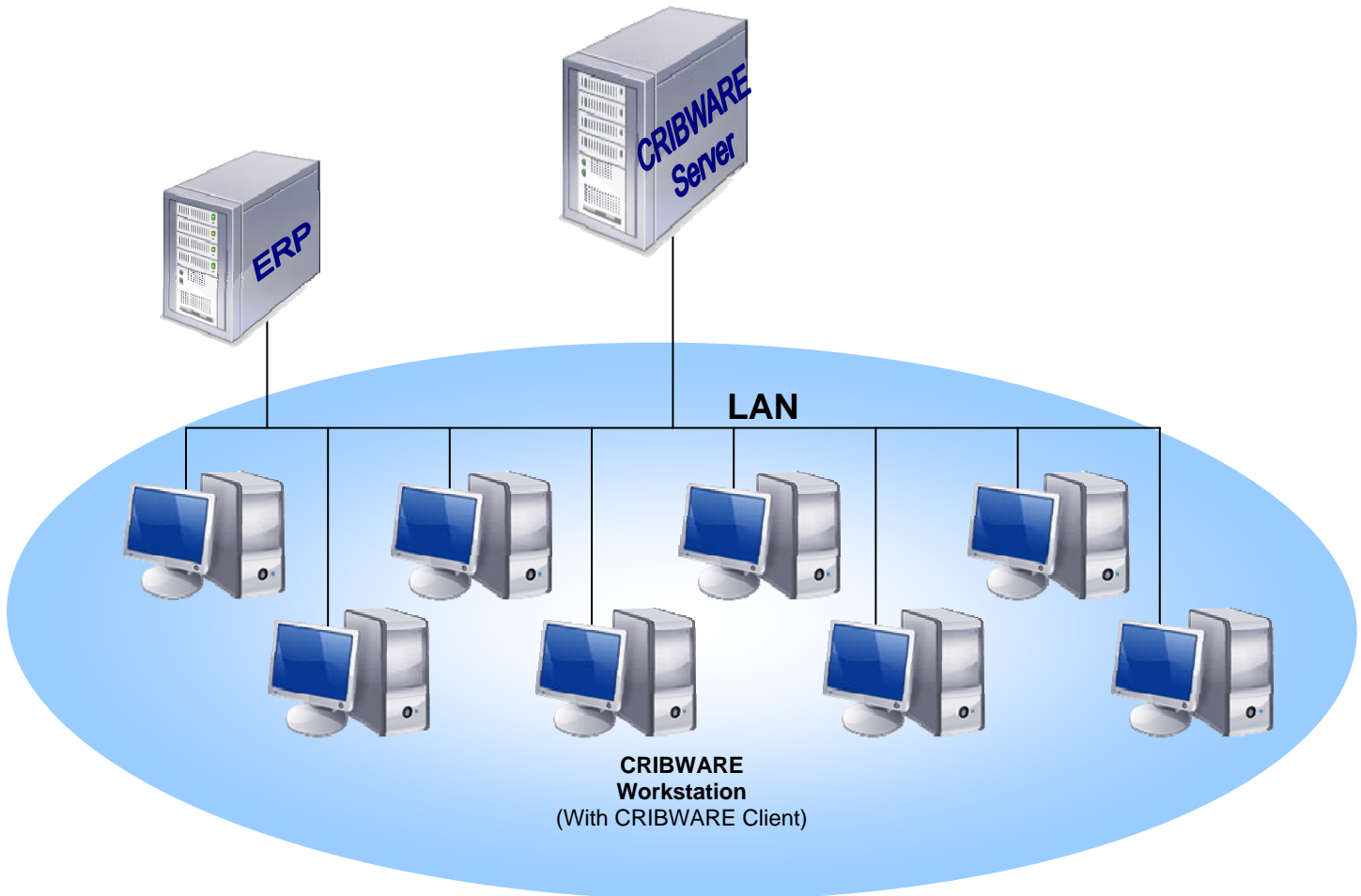
The database is also fully compliant with the universally adopted ODBC (Open Database Connectivity) standards. All data can be directly exported to other database formats (e.g. Microsoft Access, Oracle, Sybase, SQL Server).

Installation

A CRIBWARE Server (software) must be purchased based on the number of expected users and installed to the computer that will be used for a network server. An administrator's guide that explains installation, setup, and administration of the server software accompanies this software.

CRIBWARE Client Server

Multiple facilities • Remote facilities • Multiple storage locations • Vendor collaboration



BENEFITS	LOCATION OPTIONS	SYSTEM REQUIREMENTS
Robust record locking Accommodates slower local area network Fast computational turn around Increase data access speed	One Facility Multiple Users (>5) Multiple Storage Locations	Server sized to Users Windows 2000 or XP

©2008 Applied CIM Technologies, Inc. All rights reserved. The information in this document is subject to change without notice. CRIBWARE is a registered trademark of Applied CIM Technologies, Inc. All other product and company names mentioned herein may be the trademarks of their respective owners.

15200 - 25th Avenue North
 Minneapolis, MN 55447
 Telephone: 763-476-4268



Fax: 763-476-1658
 Website: www.cribware.com
 E-mail: cribware@appcim.com