

Gage & Fixture Management

Overview

The Gage and Fixture Management is an important element in the CRIBWARE® system. It builds upon the CRIBWARE functionality of classical inventory control, real-time information, and item tracking and reporting.

Benefits

- Real-time gage and fixture management
- Tracking of gages/fixtures with calibration/inspection dates
- Use of “in spec” and calibrated devices
- Online history of calibration and inspections
- Increase gage/fixture service levels
- Reduces out of calibration usage
- Eliminates scheduling hassles



Features

The CRIBWARE Gage and Fixture module incorporates:

- Procedures that meet ISO 9000 criteria
- Automatic calibration and inspection scheduling
- Planning tools for calibration and inspection activities and online documentation of these activities
- Calibration and inspection procedures
- Attribute and calibration standard documentation
- Assurance of compliance with required calibration frequency
- Real-time notification of out of calibration and specification notice
- Serial or unique number tracking
- History of all activities
- Historical acceleration or de-acceleration of required calibration
- CRIBWARE ToolView optional for linking of procedures, specifications and drawings

The screenshot shows a software window titled "Item Information" with a tabbed interface. The active tab is "Inspection/Calibration Information". The window contains the following fields and controls:

- Navigation Tabs:** Gage Attr / Tol, Notes, Tool View, Shelf Life, Descriptions / Qty's, History, Purchasing, Item / Bin, Vendor, Kit / Assembly, Gage Serial, Gage Insp.
- Item Identification:**
 - Gage/Fixture: M68442
 - Description 1: MICROMETER 0-1R, .001GRAD
 - Serial No.: [field]
 - Type: RG
 - Quantity: 1
 - Cost: 0.00
- Inspection/Calibration Information:**
 - Last Date: 04/03/1992
 - Issue Date: [field]
 - Next Date: 07/03/1992
 - Successes: 0
 - Increase: 0.00 %
 - Failures: 0
 - Decrease: 0.00 %
 - Frequency: 90
 - Since Last Cal/Ins: 0
 - Life to Date: 0
 - Maximum: 0
 - Quantity: 0
 - Usage: 0
- Navigation Buttons:** First, Prev, Next, Last, Clear, Delete.
- Buttons Work for:**
 - Fixture Database
 - Gage Database
 - Serial No. Database
- Footer Buttons:** OK, Cancel, Apply, Help.

Related Reports

- Gage/Fixture Master listing
- Calibration/Inspection Due by All Items
- Calibration/Inspection Due by Due Date
- Calibration/Inspection Due- Issued to Employee
- Calibration/Inspection Due- Issued to Department
- Gage/Fixture Calibration/Inspection Certificate

Gage & Fixture Management

An optional CRIBWARE module, Gage and Fixture Management provides:

- **Serial Number Tracking**

The addition of a serial or other unique number to the CRIBWARE item number assists in the identification, tracking and control of gages and fixtures. This number is tracked throughout the usage of the item and triggers the procedures for automatic inspection or calibration.

- **Procedure and Activity Documentation**

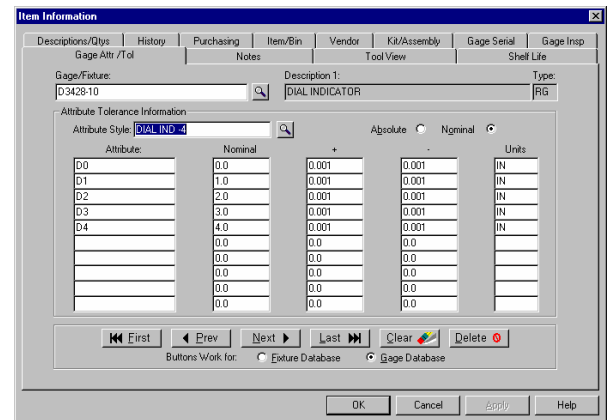
The procedures for the Calibration or Inspection activity provide online documentation and assure the revision level of the procedure. The actual results of the activity are also documented for each serial number device. Any out of specification condition will be highlighted. A calibration certificate may be printed upon successful completion.

- **Calibration or Inspection History**

The online history records the actual measured values and the calibration standard used in the calibration. Each value is compared to the specified or nominal value and recorded as such. Each activity is time stamped and the employee performing the task is recorded.

- **Out of Calibration Warning**

During the issuing of a gage or fixture, the CRIBWARE system monitors the serial number to the calibration or inspection state of the item. If the item has been inspected or calibrated during the specified period of time, the issue will proceed, if not, an out of calibration warning will appear on the Check out screen and the item cannot be issued.



- **Automatic Scheduling**

Date, usage or frequency can be used to establish the calibration or inspection interval. Scheduling by date permits either the selection of the number of days between the activity or a specific next date. Scheduling by usage defines the number of issues or check outs between an inspection or calibration. Scheduling by frequency allows for the entry of item service levels between activities. All scheduling techniques can be used simultaneously.

- **Calibration Standards**

The standard used in each calibration is tracked and documented as part of the calibration history.

CRIBWARE Integration

As part of the CRIBWARE system, Gage and Fixture Management shares many standard CRIBWARE functions:

- Check out/Check in
- Inventory Control
- Location Control
- Usage and Cost Tracking
- Purchasing and Receiving
- Advanced Reports
- MSDS documentation

©2008 Applied CIM Technologies, Inc. All rights reserved. The information in this document is subject to change without notice. CRIBWARE is a registered trademark of Applied CIM Technologies, Inc. All other product and company names mentioned herein may be the trademarks of their respective owners.